



Desert Rats Barn Hunt Club of Utah, LLC.

BARN HUNT TRIALS

DESERT RATS Barn Hunt Club

Friday, November 4, 2022
Saturday, November 5, 2022
Sunday, November 6, 2022

Permission has been granted by the Barn Hunt Association, LLC., to hold these Barn Hunt Trials under BHA Rules and Regulations

Enter Online! <https://www.entrypaws.com>
(Additional PayPal fees will apply.)

Versa Dog Training
1473 N 1000 E Layton, Utah 84041
Judges: Dan Mata (BHAJ-013A) Portland, OR

~~~~ Opening Date: Monday, August 30, 2022; Closing Date: Tuesday, Oct 24, 2022 ~~~~  
*Late and Day of Show Entries will be accepted if the trial does not fill.*

Classes Offered: Friday: Instinct, Novice, Open, Senior, Master and two Crazy 8;  
Sat/Sun: Instinct, Novice, Open, Senior, Master, Crazy 8  
*The trials will be run concurrently.*

-----  
**Friday Setup starts at 10:00 AM and first dog online at 12:00 pm**

**This will be a one judge, two ring trial. Class order will be as follows:**

Friday T1: Senior / T1 Open / T1 Crazy 8 / T1 Instinct / T1 Novice / T1 Master / T2 Crazy 8  
Saturday: T3 Senior / T3 Instinct / T3 Novice/ T4 Senior / T4 Novice / T2 C8 / T3 Open / T3 Master / T4 Open / T4 Master  
Sunday: T5 Master / T5 Open / T6 Master / T6 Open / T5 C8 / T5 Instinct / T5 Novice / T5 Senior / T6 Novice / T6 Senior

Move-Ups will be allowed between days. Not between trials on the same day.

Crazy 8 entries are limited to 20 runs per trial.

On Saturday and Sunday the facility opens at 8:00 am. First dog on the line at 8:30 am.

Running order will be flexible to account for handlers with multiple dogs.

Make checks payable to DRBHC, LLC.

Send Entries to DRBHC c/o Cynthia Heyman - 914 E Lorraine Ave, Millcreek UT 84106

Entry Forms can be filled out on <http://www.barnhunt.com>

*Participants must print and mail online entry forms to the Secretary. (\$50 charge for Non-Sufficient Funds)*

Entry fees are \$10 for Instinct; \$15 for Novice/Open; \$20 for Senior/Masters/Crazy 8. Junior Handlers pay half price per run. (Junior Handlers are age 16 and under) **Barn Hunt registration numbers are required for valid entry.** (Registration numbers can be obtained on the website: [www.barnhunt.com](http://www.barnhunt.com).)

**Entries will be accepted as received. Your entry must be complete with BHA number and signed liability waiver. Entries to fall within the time constraints of a judging day, a maximum of 8 hours of judging time per day per judge, as well as a maximum number of runs.**

**Awards:** Ribbons will be awarded for all Qualifiers in the Regular classes and the Instinct Test.

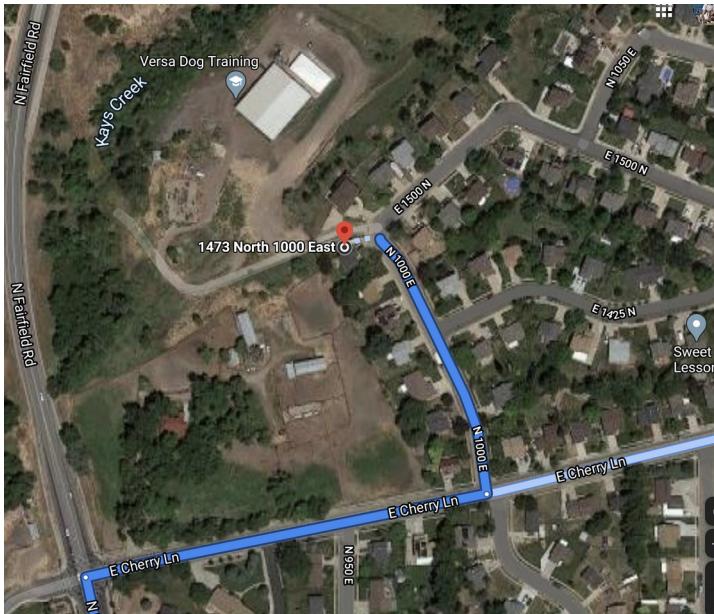
Placement ribbons will be awarded for First, Second, Third and Fourth place. Rosettes will be awarded for new titles. High In Class will be awarded for Novice, Open, Senior, and Master in each trial. **Trial Officials:** Trial Chair: Shannon Price

[umzcorgi@gmail.com](mailto:umzcorgi@gmail.com) Trial Secretary: Cynthia Heyman, 914 E Lorraine Ave, Millcreek UT 84106 [secretary@pawtap.net](mailto:secretary@pawtap.net)

Trial Committee: Jalynn Davis, Cynthia Heyman, Patricia Smith, Shannon Price; Volunteer Coordinator: Patricia Smith.

## Exhibitor Information

1. Barn Hunt information, dog registration, rules and more can be found at [www.barnhunt.com](http://www.barnhunt.com)
2. Dog's minimum age to compete in the Barn Hunt Trial is 6 months of age.
3. All dogs must be under control and on a short leash while on trial grounds except while showing. **Electric collars are not permitted** at the show site.
4. There is no smoking in this facility or on the grounds. If you must smoke you will need to do so inside your vehicle and dispose of the butts in the vehicle also.
5. Please pick up after your dog and dispose of waste in appropriate containers outside the building.
6. **Bitches in season** may compete at Barn Hunt trials. They will be run at the end of each class. Bitches in season must wear pants. If bringing a bitch in season, please inform the trial committee prior to the trial.
7. Refunds offered only for injured dogs with veterinary note. Requests for refunds must be made by the closing date. Entry fees will not be refunded after the closing date in the event that a dog is absent, disqualified, excused or barred from competition by action of the Event Committee.
8. Every attempt will be made to hold this event as scheduled. In the event of an "act of God" such as flood or fire, or civil disturbances or any other causes beyond the control of the organizing committee, an event may be canceled. We will make every attempt to contact entrants and inform them of the cancellation. We will return all or part of the entry fees at our discretion.
9. **Disruptive dogs** will have to be crated outside of the trial area. If your dog cannot handle other dogs or people walking past their crate, plan to crate outside the trial area.
10. Please make sure your crate is secure as the dogs may be highly excited. If your dog is overly excited do not leave him/her unattended.
11. **Directions to the trial site:** From North and the South: From I-15 take exit 331. Turn right (east) on N Hill Field Road. Turn right (east) onto 1000 N (This turns into Gordon Ave.). Next turn left (north) onto N Fairfield Road. At the corner is an Arby's. Then turn right (east) onto Cherry Lane. Then turn left (north) onto 1000 E. The entrance to Versa is between two residential homes. There will be a sign saying "Barn Hunt" at the beginning of the driveway leading down to Versa Dog.



For more information, future trials and club details, please visit the website <http://www.desertratters.com>  
And on Facebook:  
<https://www.facebook.com/groups/barnhuntutah/>

### Layton Utah Hotels & Motels that will accept dogs

These have not been verified! Please contact them to make sure they accept dogs.

Hyatt Place, Station Park, Farmington UT, 1-888-492-8847

Cottontree Inn – 800-780-7234 or 801-292-7666 1030 N 400 E, North Salt Lake, UT 84025

Motel 6 - 800-466-8356 or 801-298-0289 2433 S 800 W, Woods Cross, UT 84087

Disciplinary action WILL be taken if property is abused. As rules may change, please check with hotels before registering. **BHA rules & common courtesy: you are responsible for picking up after your dogs at the motels and show site.**

### VOLUNTEER SIGN UPS

**A volunteer sign-up board will be available at the beginning of each day. WE WILL NEED PEOPLE TO COME EARLY ON FRIDAY TO HELP SETUP, AND STAY ON SUNDAY AFTER THE LAST CLASS TO TEAR DOWN!** We need help to unload straw and fencing as well as constructing rings and blinds. Any and all hands that can help us out will be very appreciated.

